

# 8SFB-00035

## Features:

- Compact Package
- TTL Controlled
- By-Pass Mode
- 70 dB Stopbands



## Specifications:

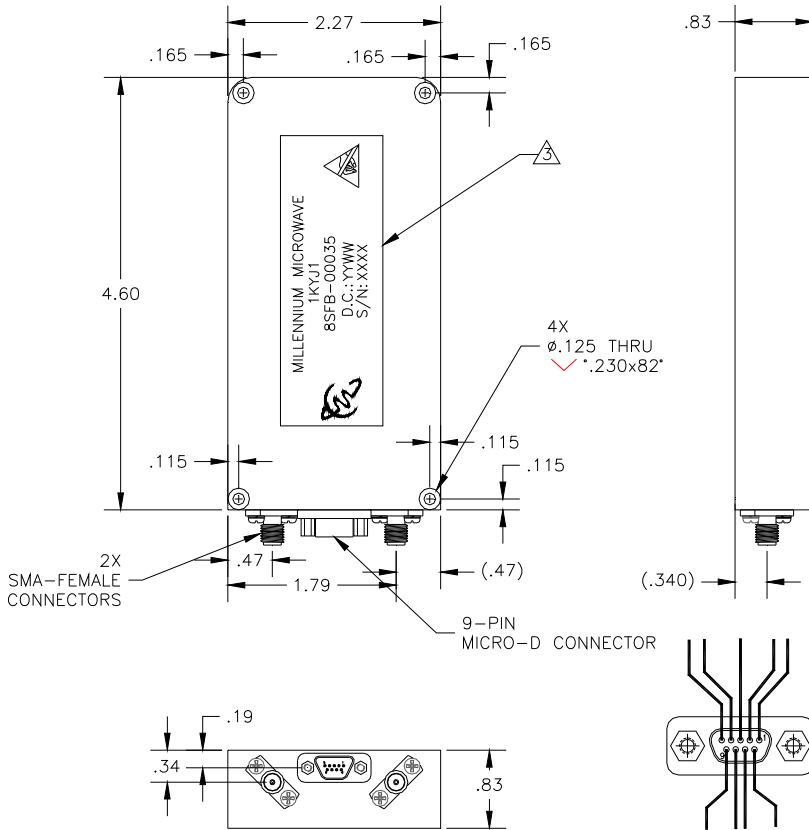
Frequency: 240 to 270 MHz																								
	CHANEL 1			CHANEL 2			CHANEL 3			CHANEL 4			CHANEL 5			CHANEL 6			CHANEL 7			CHANEL 8		
Control	0	0	0	0	0	1	0	1	0	0	1	1	1	0	0	1	0	1	1	1	0	1	1	1
PASSBAND FREQUENCY (FO)	240 MHz			245 MHz			250 MHz			255 MHz			260 MHz			265 MHz			270 MHz			By-pass MHz		
Band Edge Insertion Loss	5 MHz			5 MHz			5 MHz			5 MHz			5 MHz			5 MHz			5 MHz			30 MHz		
	237.5	MHz	242.5	242.5	MHz	247.5	247.5	MHz	252.5	252.5	MHz	257.5	257.5	MHz	262.5	262.5	MHz	267.5	267.5	MHz	272.5	240	MHz	270
Amplitude Match +/- 0.5 dB all channels	240 MHz			245 MHz			250 MHz			255 MHz			260 MHz			265 MHz			270 MHz			240-270 MHz		
Max Insertion Loss @ FO	9.5 dB			9.5 dB			9.5 dB			9.5 dB			9.5 dB			9.5 dB			9.5 dB			9.5 dB		
VSWR (80% of 3dB BW)	1.55:1 Max (-13 dB Min) 238-242 MHz			1.55:1 Max (-13 dB Min) 243-247 MHz			1.55:1 Max (-13 dB Min) 248-252 MHz			1.55:1 Max (-13 dB Min) 253-257 MHz			1.55:1 Max (-13 dB Min) 258-262 MHz			1.55:1 Max (-13 dB Min) 263-267 MHz			1.55:1 Max (-13 dB Min) 268-272 MHz			1.55:1 Max (-13 dB Min) 240-270 MHz		
In																								
Out																								
Low Side Rejection		MHz	dB	MHz	dB	MHz	dB	MHz	dB	MHz	dB	MHz	dB	MHz	dB	MHz	dB	MHz	dB	MHz	dB	MHz	dB	
	55dBc	226		231		236		240		242		247		252		252		252		252		NA		
High Side Rejection		MHz	dB	MHz	dB	MHz	dB	MHz	dB	MHz	dB	MHz	dB	MHz	dB	MHz	dB	MHz	dB	MHz	dB	MHz	dB	
	55 dBc	254		259		264		270		278		283		288		288		288		288		NA		
Switching Speed 5 uS Max	Off-On				DC Power	+5VDC @ 200mA Max			+28VDC @ 50mA Max															
	On-Off					<150mA			<30mA															
Note: In band power handling shall be a minimum of 38 dBm (CW) as a threshold and a maximum of +43 dBm +/- 1.5 dB (CW) as an objective																								
Note: The out of band power handling for each filter band shall be a maximum +33 dBm max. (CW)																								
Note: The video leakage shall be less than -60 dBm for RF frequencies greater than 20 MHz																								
Note: Passband ripple over the 3 dB BW shall not exceed +/- 1.5 dB																								



MILLENNIUM MICROWAVE CORPORATION  
 30733 PARK DRIVE, PRINCESS ANNE, MD 21853  
 PHONE: 410-742-8858  
 FAX: 410-548-7860  
 www.microwave2000.com

# 8SFB-00035

## ➤ Outline Drawing:



MICRO "D" PINOUTS

PIN	DESCRIPTION	COLOR
1	+28V	BLACK
2	+28V	BROWN
3	D2	RED
4	D1	ORANGE
5	D0	YELLOW
6	NC	GREEN
7	GND	BLUE
8	GND	VIOLET
9	+5V	GRAY



**MILLENNIUM  
MICROWAVE  
CORPORATION**

MILLENNIUM MICROWAVE CORPORATION  
 30733 PARK DRIVE, PRINCESS ANNE, MD 21853  
 PHONE: 410-742-8858  
 FAX: 410-548-7860  
[www.microwave2000.com](http://www.microwave2000.com)