

8SFB-00034

Features:

- 20 to 2000 MHz
- TTL Controlled
- VSWR 2.0:1
- 40 dB Stopbands



Specifications:

Frequency: 20 to 2000 MHz																																
	CHANNEL 1				CHANNEL 2				CHANNEL 3				CHANNEL 4				CHANNEL 5				CHANNEL 6				CHANNEL 7				CHANNEL 8			
Control	0	0	0	0	0	0	0	1	0	0	1	0	0	0	1	1	0	1	0	0	0	1	0	1	0	1	1	0	0	1	1	1
PASSBAND FREQUENCY (FO)	27.5 MHz				47.5 MHz				80 MHz				140 MHz				250 MHz				460 MHz				850 MHz				1550 MHz			
Minimum 3 dB BW	15 MHz				25 MHz				40 MHz				80 MHz				140 MHz				280 MHz				500 MHz				900 MHz			
	20	MHz	35		35	MHz	60		60	MHz	100		100	MHz	180		180	MHz	320		320	MHz	600		600	MHz	1100		1100	MHz	2000	
Max Insertion Loss @ FO	6.0 dB				6.0 dB				6.0 dB				6.0 dB				6.0 dB				6.0 dB				6.0 dB							
VSWR (80% of 3dB BW)	2.0:1 Max (-9.5 dB Min) 21.5-33.5 MHz				2.0:1 Max (-9.5 dB Min) 37.5-57.5 MHz				2.0:1 Max (-9.5 dB Min) 64-96 MHz				2.0:1 Max (-9.5 dB Min) 108-172 MHz				2.0:1 Max (-9.5 dB Min) 194-306 MHz				2.0:1 Max (-9.5 dB Min) 348-572 MHz				2.0:1 Max (-9.5 dB Min) 650-1050 MHz				2.0:1 Max (-9.5 dB Min) 1190-1910 MHz			
In																																
Out																																
Low Side Rejection		MHz			MHz				MHz				MHz				MHz				MHz				MHz				MHz			
	35dBc	17.5			30				50				90				160				300				550				1000			
High Side Rejection	35 dBc	MHz			MHz				MHz				MHz				MHz				MHz				MHz				MHz			
		40			70				120				200				360				640				1200				2200			
	40 dBc	MHz			MHz				MHz				MHz				MHz				MHz				MHz				MHz			
		60-5000			105-5000				180-5000				300-5000				540-5000				960-5000				1800-5000				3300-5000			
Switching Speed	Off-On					DC Power				+5VDC @ 150mA Max				-5VDC @ 50mA Max																		
800nS Max	On-Off																															
Note: Maximum Video Leakage is less than -60 dBm at RF output ≥ 20MHz 50uS rep rate.																																
Note: Maximum input power to the filter is +10 dBm, with 90 dB operating dynamic range.																																
Note: Channel 9 (1 X X X) is an All Off state.																																
Note: Ultimate rejection to 5GHz is a valid record at this time.																																

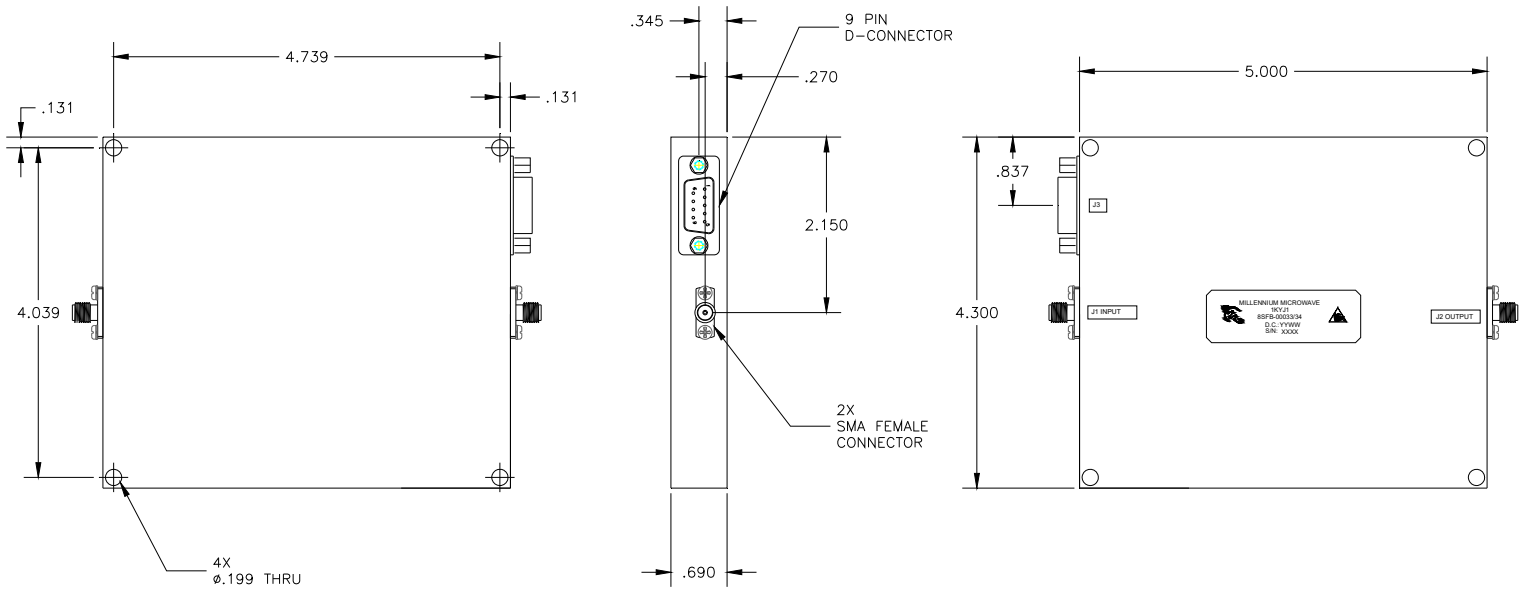


**MILLENNIUM
MICROWAVE
CORPORATION**

MILLENNIUM MICROWAVE CORPORATION
30733 PARK DRIVE, PRINCESS ANNE, MD 21853
PHONE: 410-742-8858
FAX: 410-548-7860
www.microwave2000.com

8SFB-00034

➤ Outline Drawing:



**MILLENNIUM
MICROWAVE
CORPORATION**

MILLENNIUM MICROWAVE CORPORATION
30733 PARK DRIVE, PRINCESS ANNE, MD 21853
PHONE: 410-742-8858
FAX: 410-548-7860
www.microwave2000.com