

8SFB-00031

Features:

- Custom Design
- TTL Controlled
- 950 to 6050 MHz
- 60 dB isolation



Specifications:

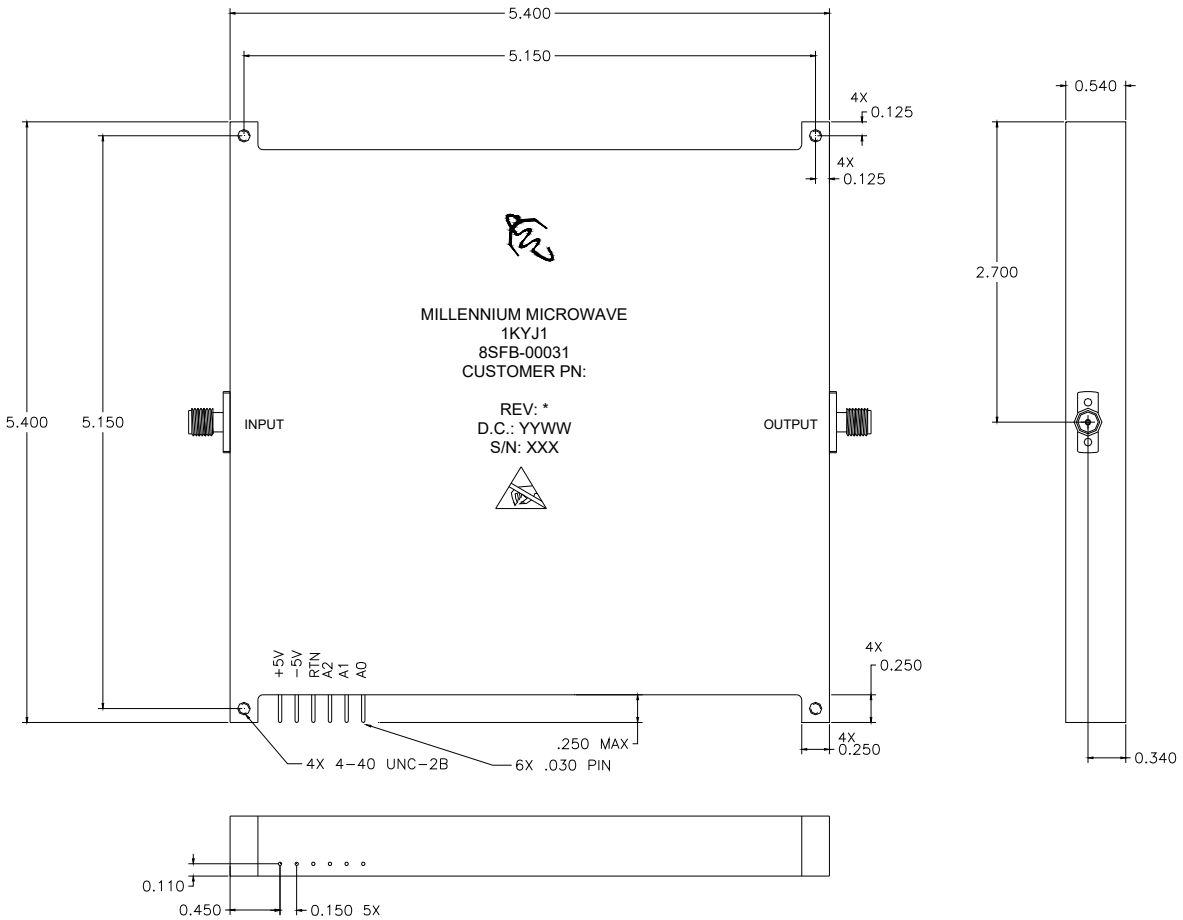
Frequency: 950-6050 MHz																									
	CHANEL 1			CHANEL 2			CHANEL 3			CHANEL 4			CHANEL 5			CHANEL 6			CHANEL 7			CHANEL 8			
Control	0	0	0	0	0	1	0	1	0	0	1	1	1	0	0	1	0	1	1	1	0	1	1	1	
PASSBAND FREQUENCY	950 - 1550 MHz			1450 - 2350 MHz			2250 - 3150 MHz			3050 - 3950 MHz			3850 - 4250 MHz			4150 - 4850 MHz			4750 - 5450 MHz			5350 - 6050 MHz			
Passband Insertion Loss (6.0 dB Max)																									
*1 Insertion Loss Flatness 0.8 dB Max																									
*2 Group Delay Flatness 2 nS Max																									
VSWR 2.5:1 Max (>7.35 dB)																									
Input																									
Output																									
Low Side Rejection	40dBc	MHz	dB	MHz	dB	MHz	dB	MHz	dB	MHz	dB	MHz	dB	MHz	dB	MHz	dB	MHz	dB	MHz	dB	MHz	dB		
	60 dBc									2800 - 3100		3100 - 3700		3700 - 4300		4300 - 4900									
	50 dBc			1050 - 1150		1050 - 1150		1050 - 1150		1050 - 1150		1050 - 1150		1050 - 1150		1050 - 1150									
	25 dBc	0 - 770		0 - 1000		0 - 1000		0 - 1000		0 - 1000		0 - 1000		0 - 1000		0 - 1000		0 - 1000		0 - 1000		0 - 1000			
	35 dBc									4450 - 5150		5050 - 5550		6250 - 18000											
High Side Rejection*3	40 dBc	1850 - 1950		2600 - 3400		3400 - 4200		4200 - 5000		5500 - 18000		6000 - 18000										7500 - 18000			
	50 dBc	2900 - 3500																							
	60 dBc	4750 - 5350		3500 - 4550		4300 - 5350		5100 - 6150																	
	40 dBc	5500 - 18000		5000 - 18000		5500 - 18000		6500 - 18000																	
Switching Speed	Off-On	75 nS																							
	On-Off																								
DC Power																									
+5 VDC 200 mA Max	115 mA																								
-5 VDC 100 mA Max	-25 mA																								



MILLENNIUM MICROWAVE CORPORATION
 30733 PARK DRIVE, PRINCESS ANNE, MD 21853
 PHONE: 410-742-8858
 FAX: 410-548-7860
 www.microwave2000.com

8SFB-00031

➤ Outline Drawing:



**MILLENNIUM
MICROWAVE
CORPORATION**

MILLENNIUM MICROWAVE CORPORATION
30733 PARK DRIVE, PRINCESS ANNE, MD 21853
PHONE: 410-742-8858
FAX: 410-548-7860
www.microwave2000.com